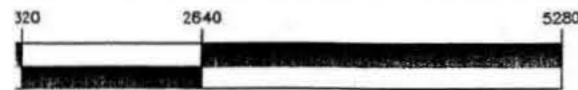
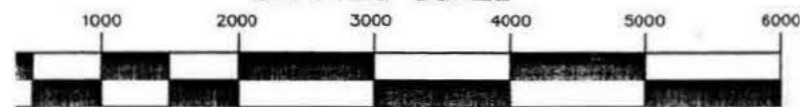


APHIC SCALE



(IN FEET)
inch = 1320 ft.

GRAPHIC SCALE



IN FEET
1" = 1000'

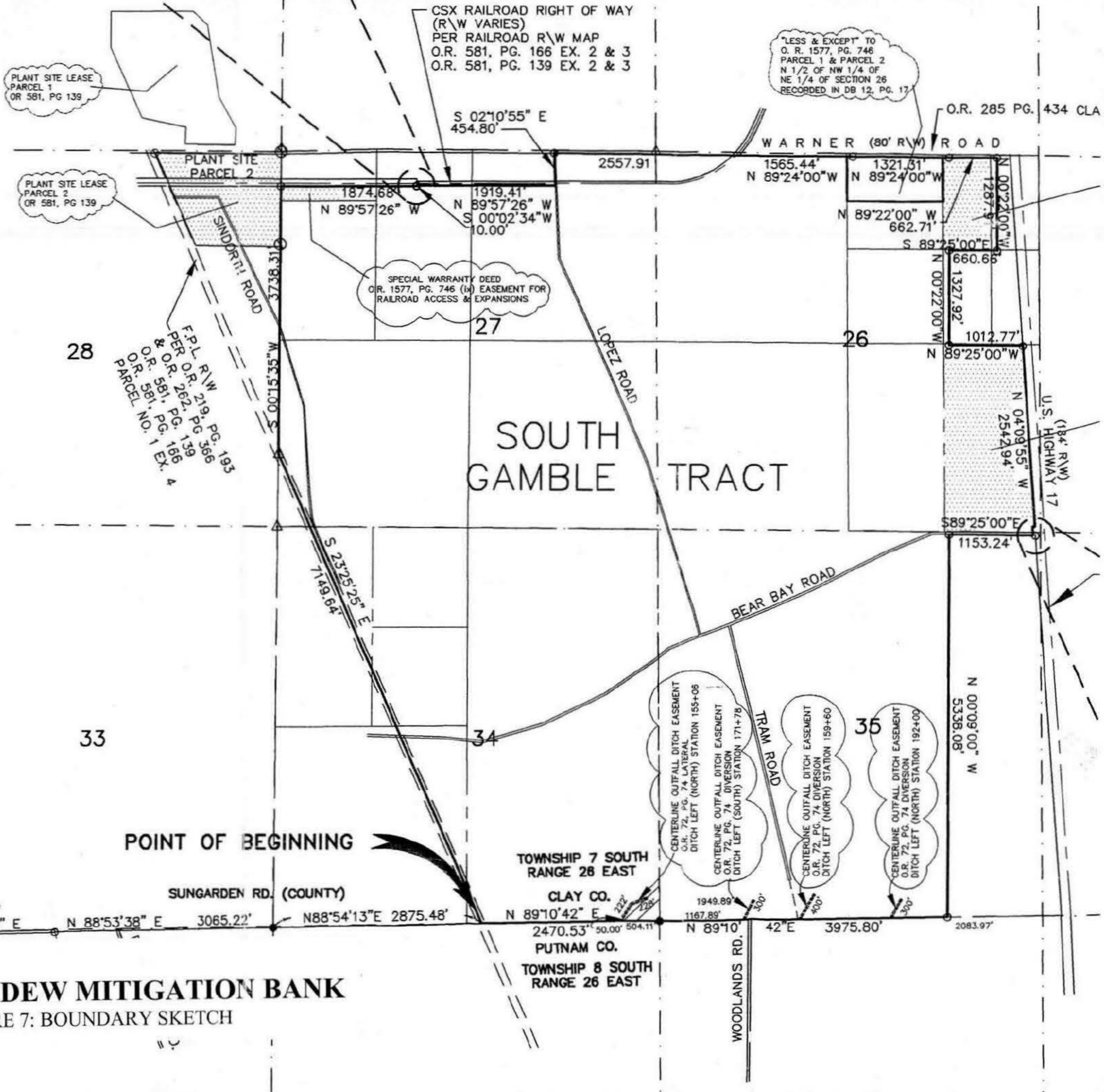
OTHER TITLE MATTERS

REVISED MARCH 30, 2000 TO SHOW TITLE MATTERS
ECTED IN COMMONWEALTH LAND TITLE INSURANCE COM-
Y COMMITMENT NO. 153032, DATED: MARCH 7, 2000
FORD, JETER, BOWLUS, DUSS & MORGAN, PA JOB NO.
-106


POINT OF REFERENCE

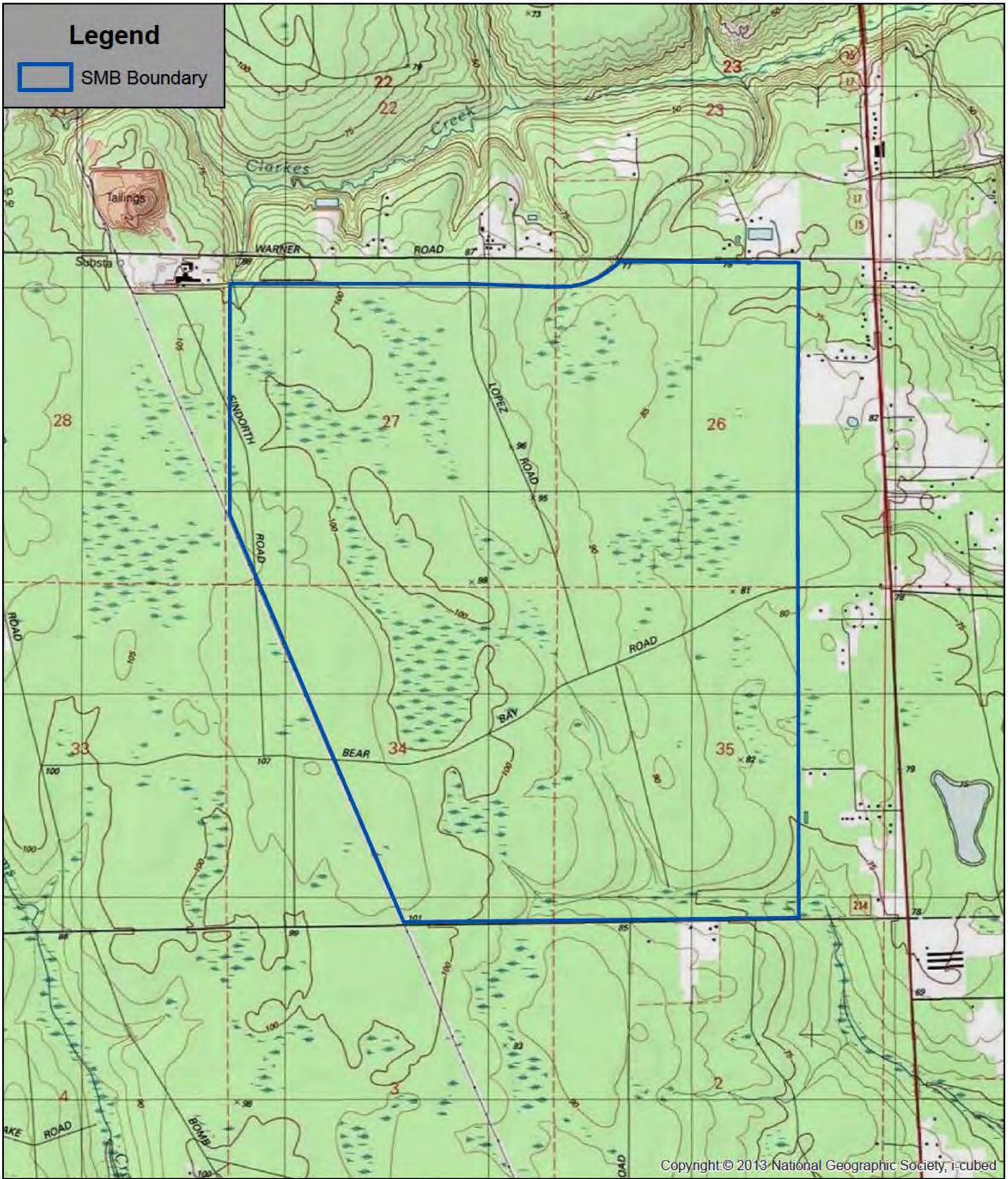
POINT OF BEGINNING

SUNDEW MITIGATION BANK
FIGURE 7: BOUNDARY SKETCH



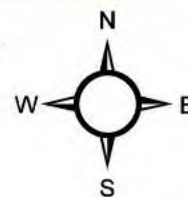
Legend

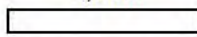
 SMB Boundary



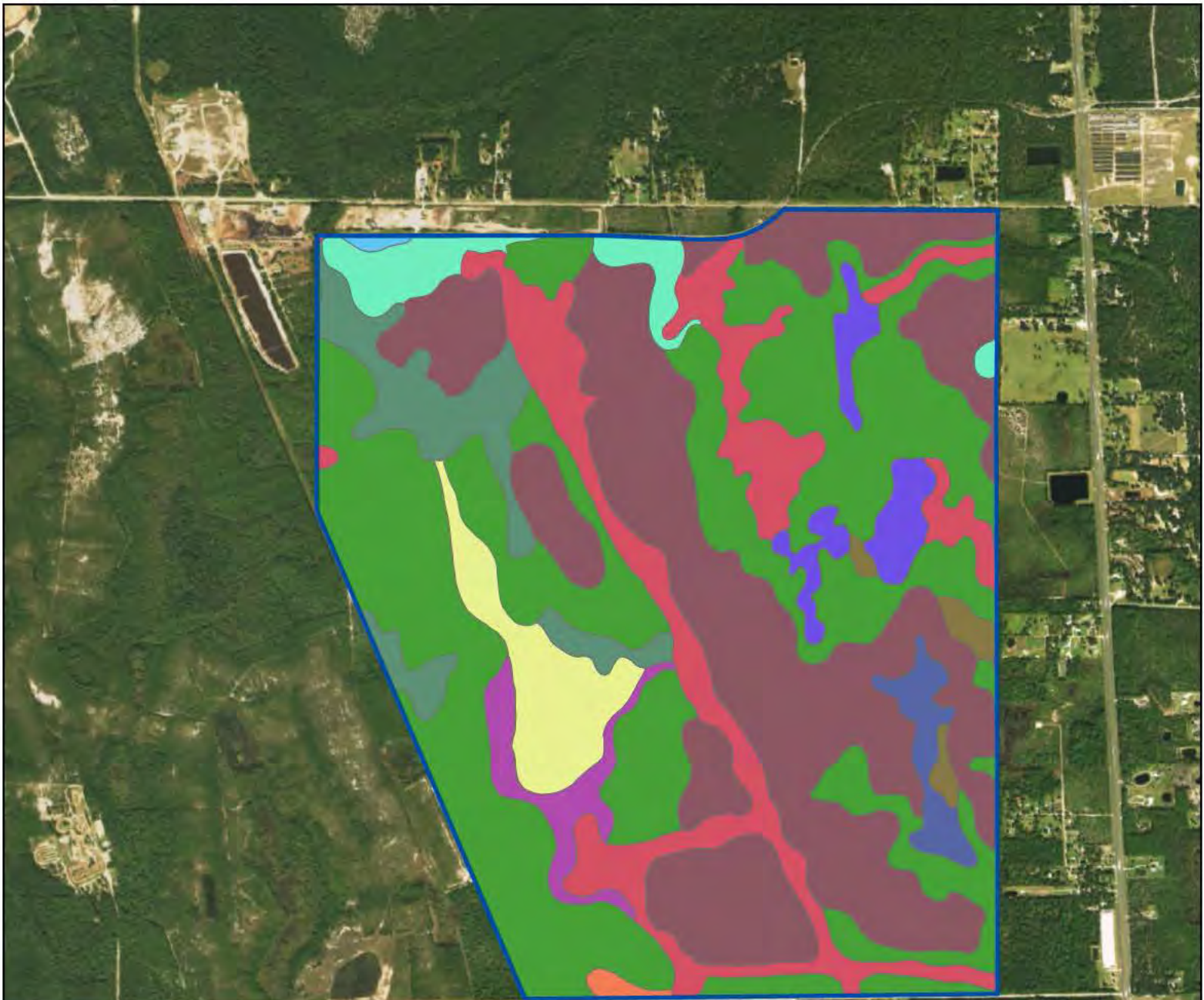
Copyright © 2013 National Geographic Society, i-cubed

Sundew Mitigation Bank
Clay County, Florida
Figure 1
Location Map

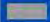
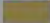
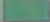

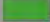
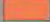
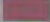
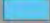







 2,000 Feet

Project #: 928-01
Produced By: JAM
Date: 2/7/2017

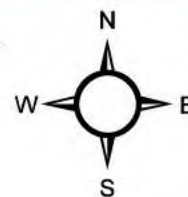


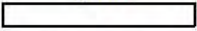
Legend

-  SMB Boundary
-  ALLANTON AND RUTLEGE MUCKY FINE SANDS, DEPRESSIONAL
-  ALLANTON F NE SAND, FREQUENTLY FLOODED
-  HURRICANE FINE SAND, 0 TO 5 PERCENT SLOPES
-  LEON F NE SAND
-  LYNN HAVEN FINE SAND
-  MANDARIN FINE SAND
-  ORTEGA F NE SAND, 0 TO 5 PERCENT SLOPES
-  OSIER FINE SAND
-  PAMLICO MUCK
-  PAMLICO MUCK, FREQUENTLY FLOODED
-  POTTSBURG F NE SAND
-  RUTLEGE-OSIER COMPLEX, FREQUENTLY FLOODED

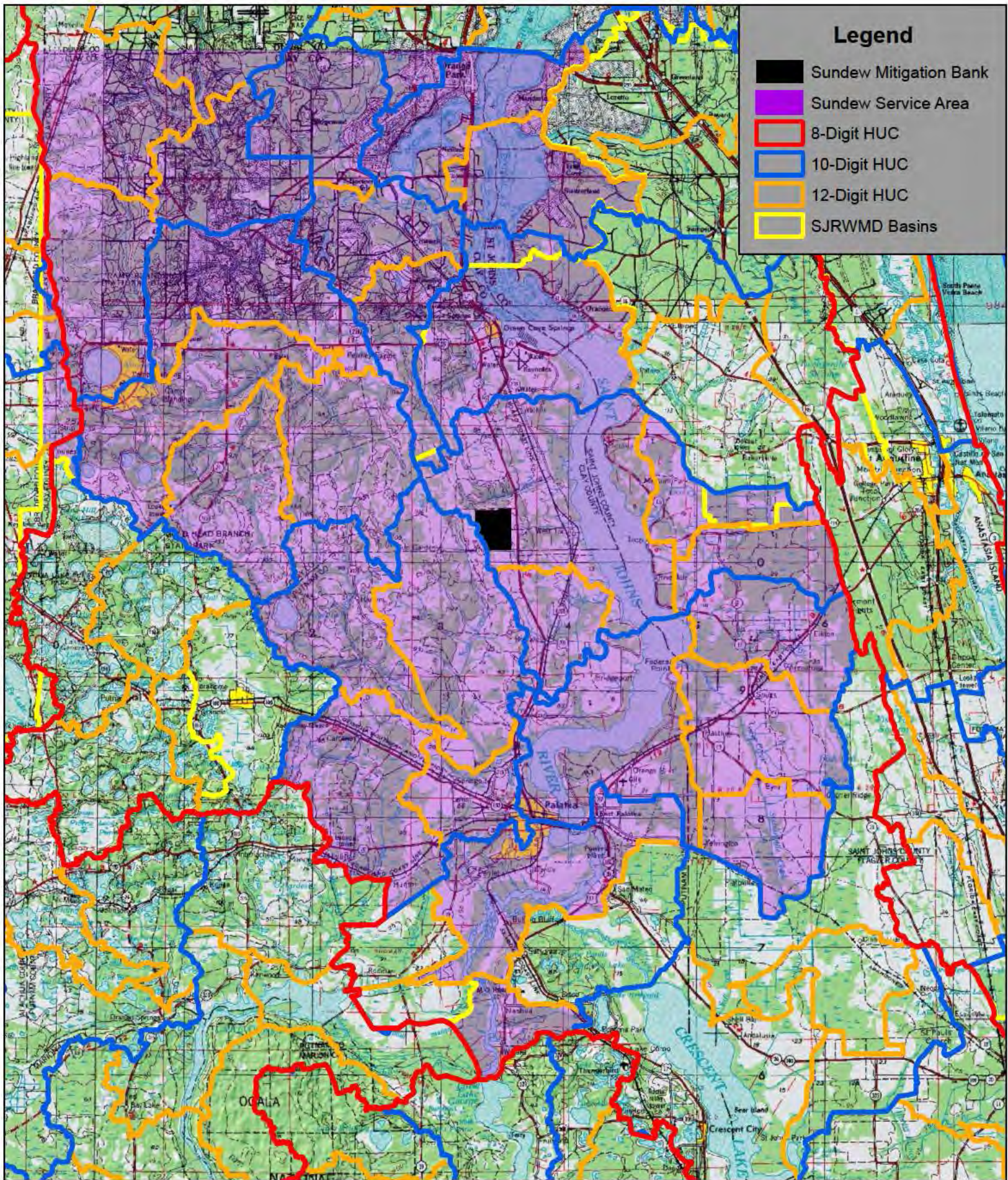
Source: Esri, DigitalGlobe, GeoEye, Earthstar Geographics, CNES/Airbus DS, USDA, USGS, AeroGRID, IGN, and the GIS User Community

Sundew Mitigation Bank
 Clay County, Florida
 Figure 2
 Soils Map

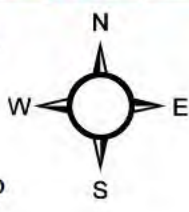


2,000
 Feet

Project #: 928-01
 Produced By: JAM
 Date: 2/7/2017

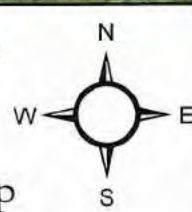
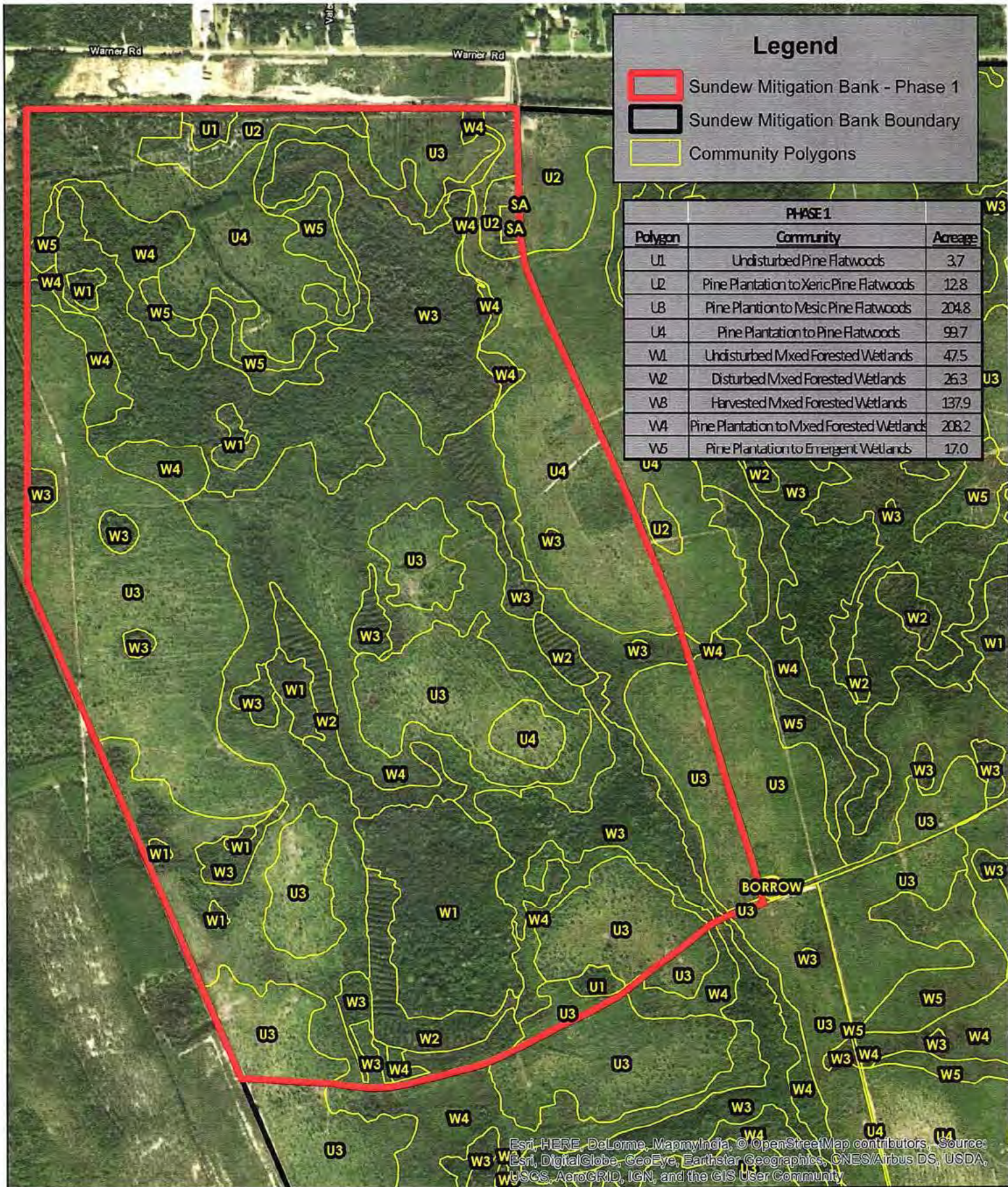


Sundew Mitigation Bank
 Clay County, Florida
 Figure 3
 USACE Service Area Map



6 Miles

Project #: 928-01
 Produced By: JAM
 Date: 4/26/2017



1,000 Feet

Esri, HERE, DeLorme, MapmyIndia, © OpenStreetMap contributors, Source: Esri, DigitalGlobe, GeoEye, Earthstar Geographics, CNES/Airbus DS, USDA, USGS, AeroGRID, IGN, and the GIS User Community

Legend

-  Sundew Mitigation Bank - Phase 2
-  Sundew Mitigation Bank Boundary
-  Community Polygons

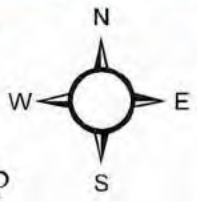
PHASE 2		
Polygon	Community	Acreage
U2	Pine Plantation to Xeric Pine Flatwoods	38.7
UB	Pine Plantation to Mesic Pine Flatwoods	145.2
U4	Pine Plantation to Pine Flatwoods	53.1
W1	Undisturbed Mixed Forested Wetlands	12.3
W2	Disturbed Mixed Forested Wetlands	18.6
W3	Harvested Mixed Forested Wetlands	92.1
W4	Pine Plantation to Mixed Forested Wetlands	214.5
W5	Pine Plantation to Emergent Wetlands	40.7
Borrow	Borrow Pond	0.6



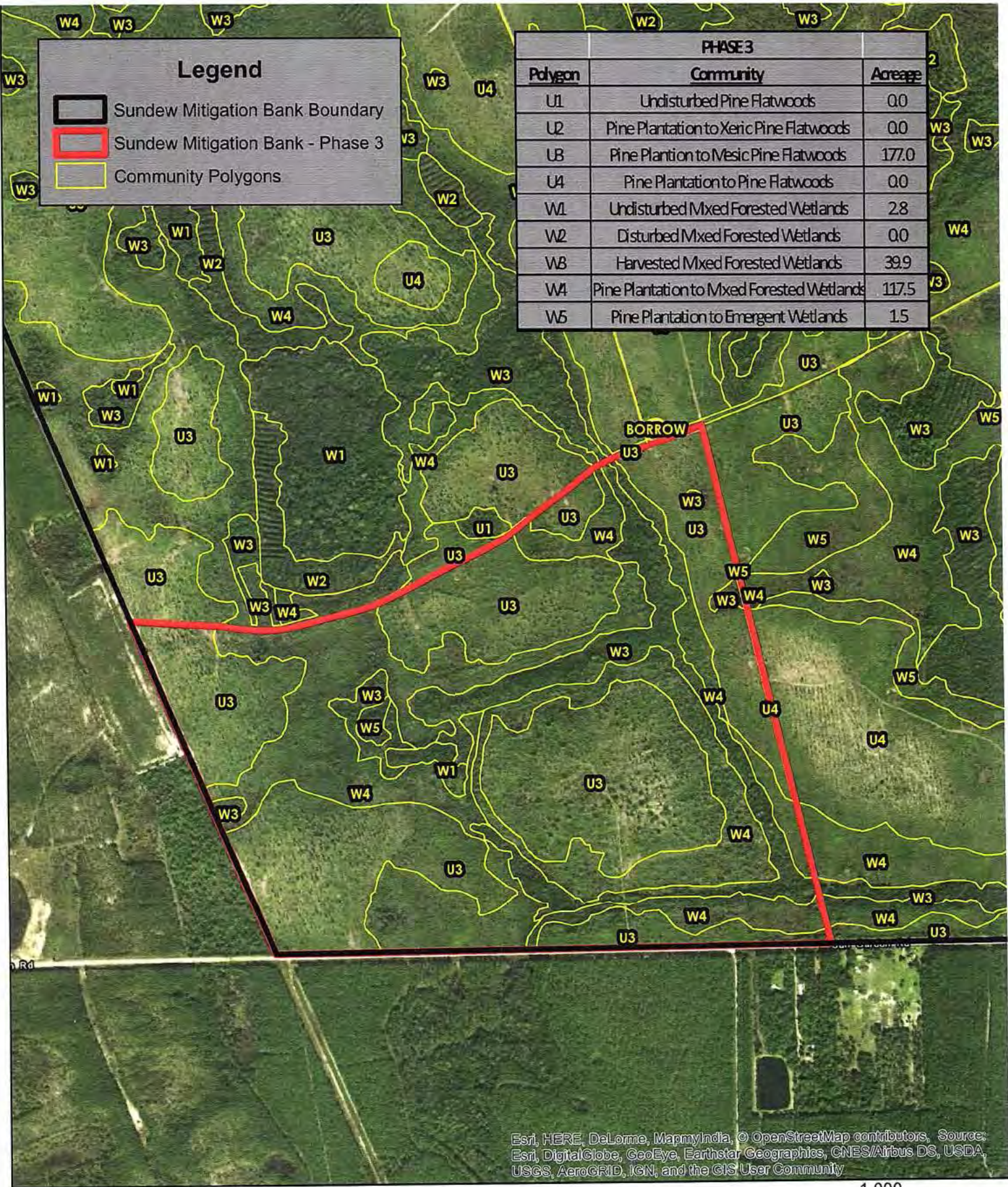
Esri, HERE, DeLorme, MapmyIndia, © OpenStreetMap contributors, Source: Esri, DigitalGlobe, GeoEye, Earthstar Geographics, CNES/Airbus DS, USDA, USGS, AeroGRID, IGN, and the GIS User Community

Bio-Tech Consulting Inc.
 Environmental and Permitting Services
 2002 E. Robinson St. Orlando, FL 32803
 Ph: 407-894-5969 Fax: 407-894-5970
 www.bio-techconsulting.com

Sundew Mitigation Bank
 Clay County, Florida
 Figure 4B
 Phase 2 Communities Map



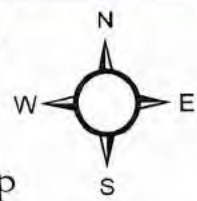
1,000 Feet
 Project #: 928-01
 Produced By: JAM
 Date: 2/7/2017



Esri, HERE, DeLorme, MapmyIndia, © OpenStreetMap contributors, Source: Esri, DigitalGlobe, GeoEye, Earthstar Geographics, CNES/Airbus DS, USDA, USGS, AeroGRID, IGN, and the GIS User Community

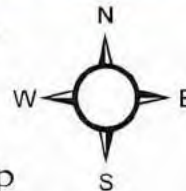
Bio-Tech Consulting Inc.
 Environmental and Permitting Services
 2002 E. Robinson St. Orlando, FL 32803
 Ph: 407-894-5969 Fax: 407-894-5970
 www.bio-techconsulting.com

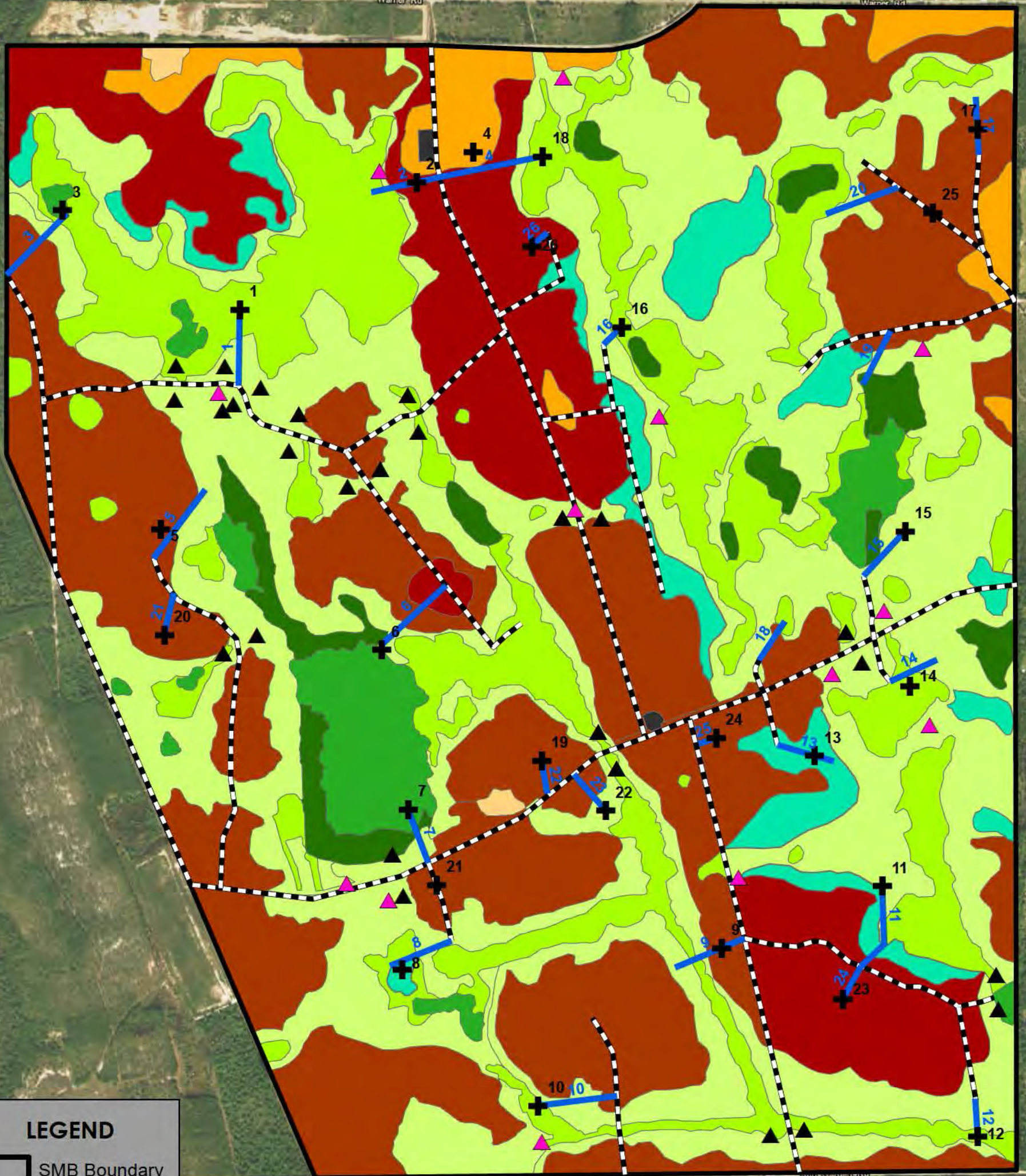
Sundew Mitigation Bank
 Clay County, Florida
 Figure 4C
 Phase 3 Communities Map



1,000 Feet

Project #: 928-01
 Produced By: JAN.
 Date: 2/7/2017





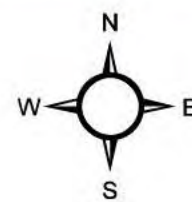
LEGEND

- SMB Boundary
- ERS**
- BORROW
- SA
- U1
- U2
- U3
- U4
- W1
- W2
- W3
- W4
- W5

Monitoring Legend

- Staff Gauges
- Monitoring Wells
- Monitoring/Photo Stations
- Permanent Pedestrian Transects
- Permanent Vehicular Transects

Esri, HERE, DeLorme, MapmyIndia, © OpenStreetMap contributors, Source: Esri, DigitalGlobe, GeoEye, Earthstar Geographics, CNES/Airbus DS, USDA, USGS, AeroGRID, IGN, and the GIS User Community



1,000
 Feet